

The Model 6001 Terminal Adapter allows a Tone Commander 6210 or 6220 ISDN telephone to be controlled by a TAPI-compliant Windows computer application program. Adapter circuitry is housed in a telephone base that replaces the standard base. An RS232 serial port on the base connects to the computer's com port.

A Windows TSPI driver, available for download from [www.tonecommander.com](http://www.tonecommander.com), is required to use the features of the 6001TA. You will also need TAPI-compliant Windows application program.

PhoneLink™ for Outlook®, a free basic call alerting and control application that integrates with Microsoft® Outlook, can be downloaded from [www.tonecommander.com](http://www.tonecommander.com). The TSPI driver is included with PhoneLink for Outlook. Several TAPI-compliant programs are available from other vendors.

**Telephone operating software must be version 01.03.02 or higher to enable the TAPI features.** To view the installed software version, select VERS, then S/W from the Administration Options menu (**Setup** → ADMIN → VERS → S/W). If your phone's software version is lower than 01.03.02, call Tone Commander at (800) 524-0024 to request an update.

## **Terminal Adapter Installation**

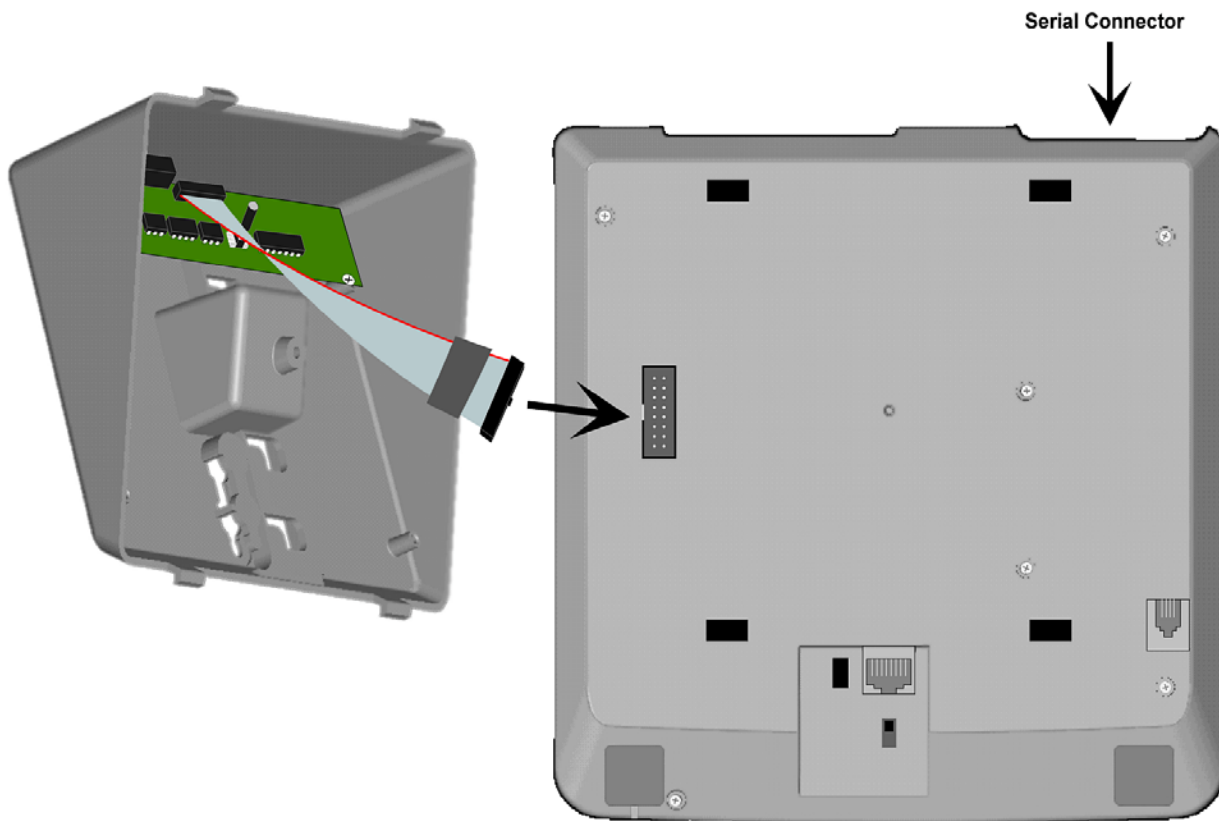
### **Mounting the Base**

Refer to the illustration on the following page.

1. Disconnect the line cord.

**Power must be disconnected before installing the 6001TA.  
Wait 10 seconds after disconnecting power before proceeding.**

2. Remove the retaining screw in the center of the base.
3. Press the top of the tall edge of the base to disengage the snap tabs, then lift the base from the telephone body. *Do not touch the expansion connector.*
4. Plug the cable from the terminal adapter base into the expansion connector on the telephone. The polarization tab on the plug must fit into the opening on the side of the phone connector.
5. Snap the terminal adapter base onto the phone. The base may be rotated for wall mounting.
6. Replace the retaining screw (required for UL compliance).



### Telephone – Computer Serial Connection

1. Plug the supplied serial cable (standard straight-through modem cable) into the serial connector on the telephone base.
2. Plug the other end of the cable into the serial port that will be selected during the TSPI driver installation. If the computer has a 25-pin serial connector, you will need to obtain a DB9-DB25 adapter.
3. Slide the ferrite core on the cable toward the phone connector as shown.

## **Service**

Repair of the 6001TA must be done by Tone Commander. Prior to equipment removal, contact Tone Commander Customer Technical Support for assistance in determining the source of the problem. This critical action can often prevent needless removal of equipment and subsequent customer inconvenience.

Tone Commander  
Technical Support Department  
11609 49th Place West  
Mukilteo, WA 98275-4255 USA

Phone: (425) 349-1000  
(800) 524-0024

Fax: (425) 349-1010

E-mail: [tech@tonecommander.com](mailto:tech@tonecommander.com)

Web: [www.tonecommander.com](http://www.tonecommander.com)

Tone Commander is committed to meeting the product needs of our customers. Please write or call us with any suggestions for improvement.

## **Tone Commander Product Warranty**

For a period of one year from date of dealer purchase, but not to exceed 16 months from date of manufacture, Tone Commander Systems, Inc. (Tone Commander) warrants its products to be free from defects in material and workmanship under conditions of normal use and service. Tone Commander shall, at its option, repair or replace any defective product which, in its opinion, has not been misused, damaged, or improperly installed.

Repair or replacement under this warranty will be performed at Tone Commander's factory. Authorization must be obtained from Tone Commander prior to returning a product for repair. Freight must be prepaid for all units returned to Tone Commander. Units repaired under warranty will be shipped UPS Ground (or equivalent), freight prepaid by Tone Commander.

Products that are older than the warranty period, but less than 7 years old, or still manufactured by Tone Commander may be repaired at the factory for a flat rate charge. Repaired out-of-warranty units are warranted for 90 days from the date of repair.

The repair or replacement of a product under this warranty represents the entire obligation of Tone Commander; Tone Commander shall not be liable for any special or consequential damages resulting from or caused by any defect, failure, incapacity or malfunction of any of its products.

*The foregoing express warranty is in lieu of all other warranties, express or implied, including, but not limited to any implied warranty of merchantability, fitness, or adequacy for any purpose or use, quality, productiveness or capacity; Tone Commander, to the extent permitted by law, hereby disclaims all such other warranties.*

Tone Commander is a registered trademark of Tone Commander Systems, Inc.

Microsoft, Windows, and Outlook are trademarks or registered trademarks of Microsoft Corp.